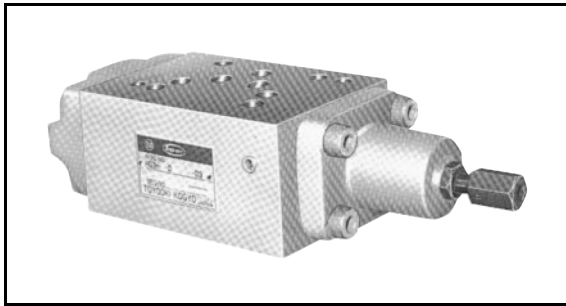


# SEQUENCE VALVE (HQ3H) SIZE 025 / 03 / 06



- If back pressure is applied to the drain port, the setting pressure increases by the applied back pressure. Due attention must be paid especially to the R port back pressure when an internal drain type reducing valve is used.

## SPECIFICATIONS

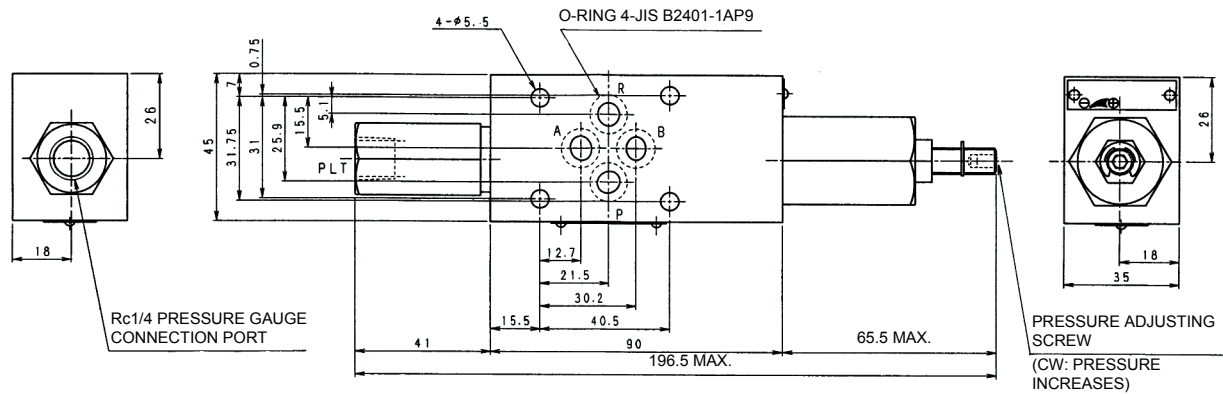
Controlled Port	Pilot Type	Drain Type	Model	Max. Operating Pressure (MPa)	Rated Flow (L/min)	Max. Flow (L/min)	Symbol	Pressure Adjustment Range (MPa)
P	Internal Pilot	Internal Drain	HQ3H-P-D*-025B	25	20	40		[Pressure adjustment range] Size 025 * symbol 4: 0.7 to 7 5: 3.5 to 14  Size 03, 06 * symbol 4: 0.7 to 7 5: 3.5 to 14 6: 10.5 to 21
			HQ3H-P-D*-03	21	40	80		
			HQ3H-P-D*-06		120	190		
		External Drain	HQ3H-P-D*D-03	40	80			
			HQ3H-P-D*D-06	120	190			
			HQ3H-P-D*D-E-03	40	80			
	External Pilot	Internal Drain	HQ3H-P-D*E-025B	25	20	40		
			HQ3H-P-D*E-03	21	40	80		
			HQ3H-P-D*E-06		120	190		
		External Drain	HQ3H-P-D*ED-03	40	80			
HQ3H-P-D*ED-06	120		190					

# SPECIFICATIONS

Controlled Port	Pilot Type	Drain Type	Model	Max. Operating Pressure (MPa)	Rated Flow (L/min)	Max. Flow (L/min)	Symbol	Pressure Adjustment Range Check Valve Cracking Pressure (MPa)
A	Internal Pilot	Internal Drain	HQ3H-A-D*K-025B	25	20	40		[Pressure adjustment range] Size 025 * symbol 4: 0.7 to 7 5: 3.5 to 14  Size 03, 06 * symbol 4: 0.7 to 7 5: 3.5 to 14 6: 10.5 to 21  [Check valve cracking pressure] 0.04
			HQ3H-A-D*K-03	21	40	80		
			HQ3H-A-D*K-06		120	190		
		External Drain	HQ3H-A-D*DK-03	40	80			
			HQ3H-A-D*DK-06	120	190			
	External Pilot	Internal Drain	HQ3H-A-D*EK-025B	25	20	40		
			HQ3H-A-D*EK-03	21	40	80		
			HQ3H-A-D*EK-06		120	190		
		External Drain	HQ3H-A-D*EDK-03	40	80			
			HQ3H-A-D*EDK-06	120	190			
B	Internal Pilot	Internal Drain	HQ3H-B-D*K-025B	25	20	40		
			HQ3H-B-D*K-03	21	40	80		
			HQ3H-B-D*K-06		120	190		
		External Drain	HQ3H-B-D*DK-03	40	80			
			HQ3H-B-D*DK-06	120	190			
	External Pilot	Internal Drain	HQ3H-B-D*EK-025B	25	20	40		
			HQ3H-B-D*EK-03	21	40	80		
			HQ3H-B-D*EK-06		120	190		
		External Drain	HQ3H-B-D*EDK-03	40	80			
			HQ3H-B-D*EDK-06	120	190			

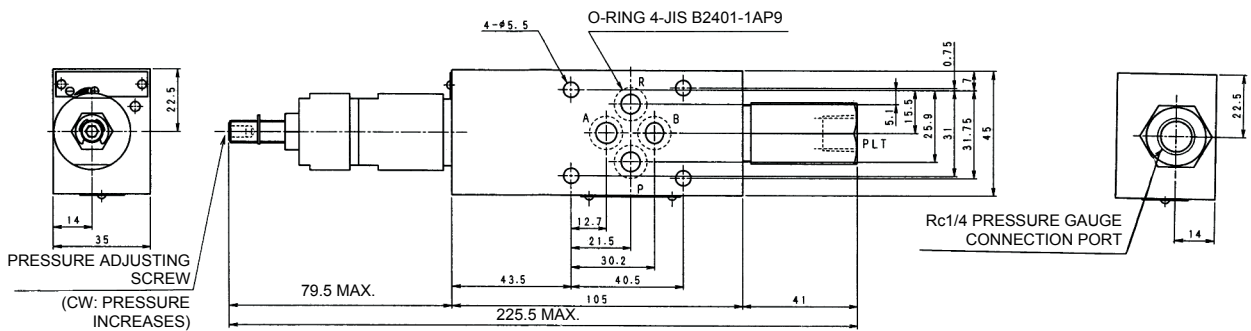
**EXTERNAL DIMENSIONS**

**● HQ3H-P-D\*(E)-025B**

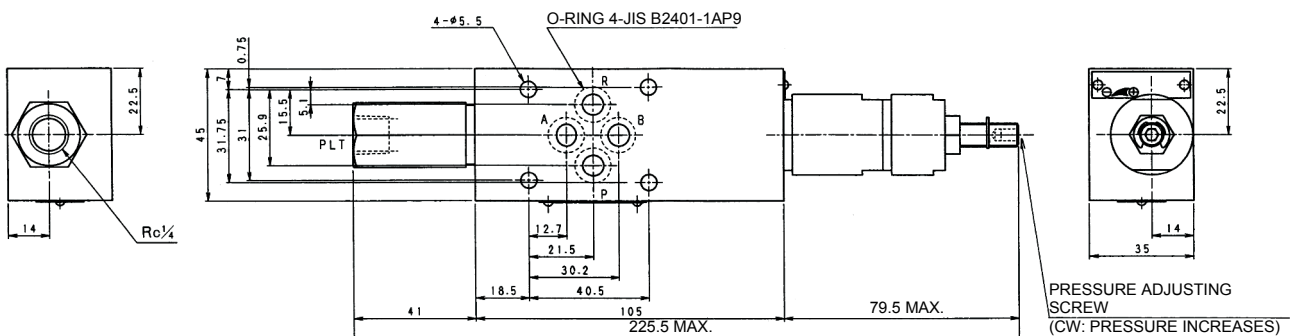


MASS: 1.22 kg

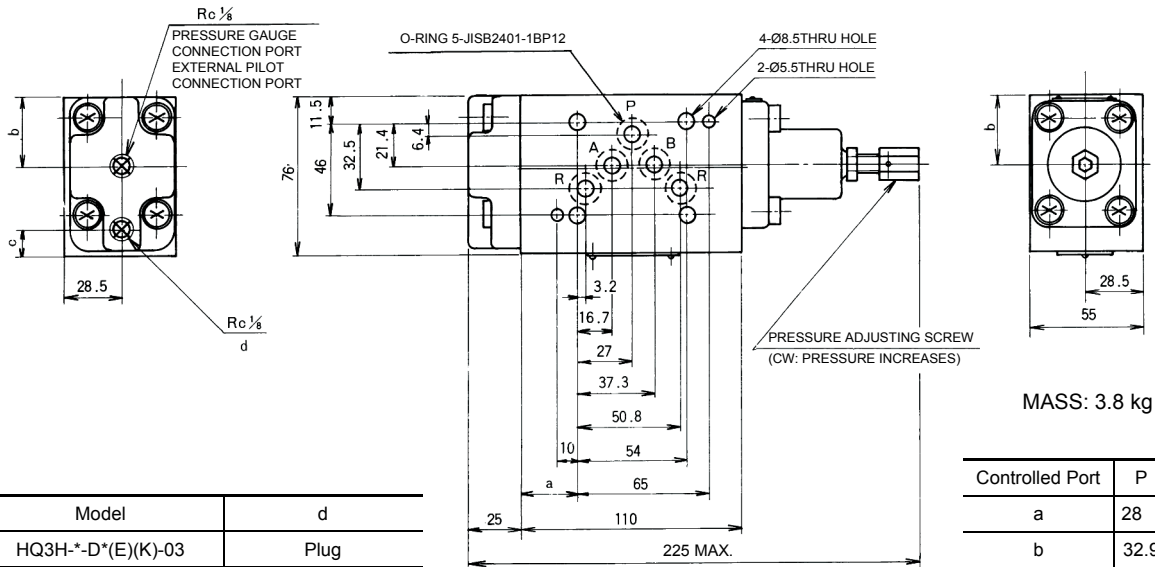
**● HQ3H-A-D\*(E)K-025B**



**● HQ3H-B-D\*(E)K-025B**



● HQ3H-\*-D\*(E)(D)(K)-03

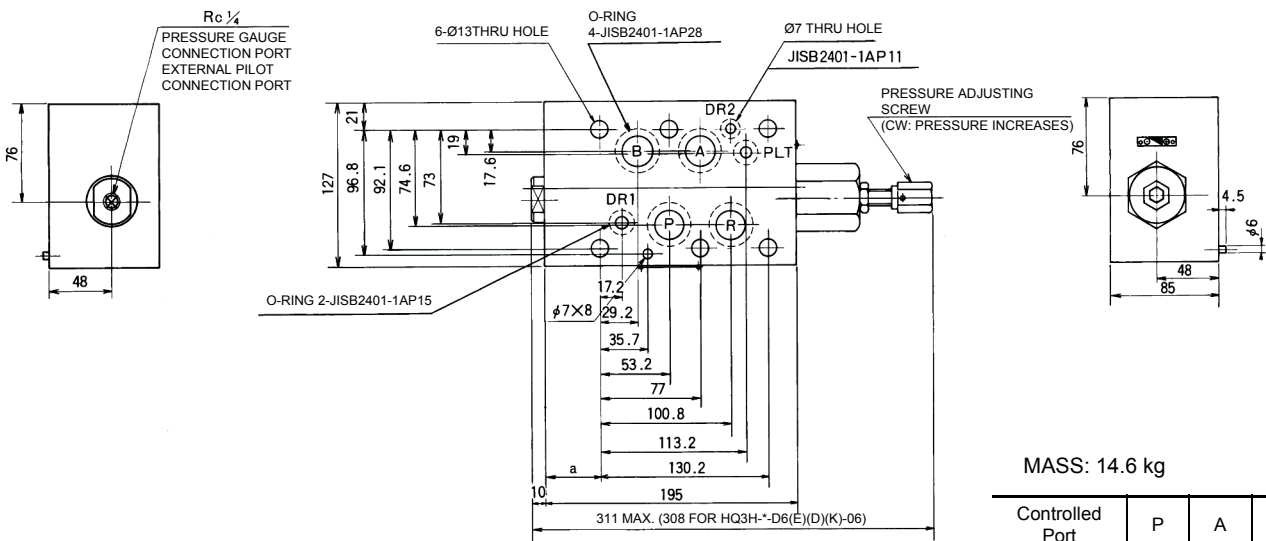


MASS: 3.8 kg

Model	d
HQ3H-*-D*(E)(K)-03	Plug
HQ3H-*-D*(E)(D)(K)-03	External drain outlet

Controlled Port	P	A	B
a	28	32	24
b	32.9	34.5	34.5
c	12.1	10.5	10.5

● HQ3H-\*-D\*(E)(D)(K)-06



MASS: 14.6 kg

Controlled Port	P	A	B
a	43	31	43